



OYSTER 885

*Guardian Angel*

# OYSTER 885

## BROKER'S COMMENTS

"Guardian Angel is a stunning example of Oyster 885. With her customized interior arrangement plan she is ideal for comfortable passages and due to upgraded rigging and sails equally capable of making a statement on the racecourse. Oyster 885 is a remarkable 90 foot blue water sailing yacht. Designed by Rob Humphreys with sailing and entertaining in mind, engineered by Oyster to deliver uncompromising luxury and performance. At just under 90 feet, the Oyster 885 comes in just below the 24m Load Line Rule, which means less red tape with many of the benefits of a much larger yacht. "

## SPECIFICATIONS

<b>Dimensions</b>	27,08 x 6,33 x 3,50 (m)	<b>Builder</b>	Oyster Yachts
<b>Built</b>	2015	<b>Cabins</b>	4
<b>Material</b>	GRP	<b>Berths</b>	9
<b>Crew cabins</b>	1	<b>Crew berths</b>	1
<b>Engine(s)</b>	1 x Cummins QSL 9-M diesel	<b>Hp/Kw</b>	330 (hp), 242,88 (kw)
<b>Displacement</b>	71 (t)	<b>Location</b>	Slovenia
<b>Asking price</b>	EUR 5.450.000 (vat: not paid)		

# OYSTER 885

## GENERAL

<b>Model</b>	OYSTER 885
<b>Type</b>	sailing yacht
<b>LOA (m)</b>	27,08
<b>LWL (m)</b>	24,18
<b>Beam (m)</b>	6,33
<b>Draft (m)</b>	3,50
<b>Year built</b>	2015
<b>Launched</b>	2015
<b>Builder</b>	Oyster Yachts
<b>Country</b>	United Kingdom
<b>Designer</b>	Rob Humphreys
<b>Displacement (t)</b>	71
<b>Hull material</b>	GRP
<b>Hull colour</b>	blue Metallic dark blue Awlcraft
<b>Hull shape</b>	yes
<b>Keel type</b>	bulb keel
<b>Superstructure material</b>	GRP
<b>Deck material</b>	GRP
<b>Deck finish</b>	teak
<b>Superstructure deck finish</b>	non-skid paint
<b>Cockpit deck finish</b>	teak
<b>Antifouling (year)</b>	2022
<b>Radar arch</b>	Radar pole aft
<b>Fuel tank (litre)</b>	3500
<b>Level indicator (fuel tank)</b>	yes
<b>Freshwater tank (litre)</b>	2000
<b>Level indicator (freshwater)</b>	yes
<b>Blackwater tank (litre)</b>	yes
<b>Level indicator (blackwater)</b>	yes
<b>Blackwater tank extraction</b>	yes

# OYSTER 885

Greywater tank (litre)	yes
Level indicator (greywater)	yes
Wheel steering	yes
Outside helm position	hydraulic

## ACCOMMODATION

Cabins	4
Berths	9
Crew cabin	1
Crew berths	2
Interior	walnut Crown cut walnut, gloss finish
Layout	Custom interior, foam core joinery for light weight construction
Floor	teak V-groove maple satin finish
Aft deck	yes
Deck saloon	Raised saloon version - one level floor, no steps in the saloon
Saloon	yes
Heating	central hot water
Air-conditioning	reverse cycle airco
Navigation center	yes
Chart table	yes
Aft Cabin	Owners
Dining room	yes
Dinette	In crew cabin
Sliding door to cockpit	yes
Opening door to cockpit	Electric
Galley	yes
Countertop	corian White
Sink	stainless steel
Cooker	ceramic Electric
Oven	Electric
Extractor	yes

# OYSTER 885

Gas alarm	yes
Microwave/oven combi	Miele
Fridge	Frigoboa
Freezer	Frigoboat
Wine cooler	In saloon
Hot water system	220V + engine
Water pressure system	electrical
Dishwasher	Miele
Kettle	yes
Hot water tap	yes
Coffee maker	yes
Crockery	yes
Waste compactor	Broan
Owners cabin	double bed
Wardrobe	hanging/drawers/shelves
Bathroom	en suite
Toilet	en suite
Toilet system	electric Tecma
Wash basin	in the bathroom
Shower	en suite
Guest cabin 1	double bed
Wardrobe	hanging/drawers/shelves
Toilet	shared
Toilet system	electric Tecma
Wash basin	in the bathroom
Shower	shared
Guest cabin 2	twin single
Wardrobe	hanging/drawers/shelves
Bathroom	shared
Toilet	shared
Toilet system	electric Tecma
Wash basin	in the bathroom

# OYSTER 885

<b>Shower</b>	shared
<b>Crew cabin(s)</b>	2 bunk berths
<b>Bathroom (crew)</b>	yes
<b>Toilet (crew)</b>	en suite
<b>Toilet system</b>	electric Tecma
<b>Wash basin</b>	in the bathroom
<b>Shower (crew)</b>	yes
<b>Washing machine/dryer combi</b>	Miele

## MACHINERY

<b>No of engines</b>	1
<b>Make</b>	Cummins
<b>Type</b>	QSL 9-M
<b>HP</b>	330
<b>kW</b>	242.88
<b>Fuel</b>	diesel
<b>Year installed</b>	2015
<b>Maximum speed (kn)</b>	12
<b>Cruising speed (kn)</b>	10
<b>Engine hours</b>	6020
<b>Engine cooling system</b>	freshwater heat exchanger
<b>Drive</b>	shaft
<b>Engine controls</b>	electrical
<b>Bowthruster</b>	hydraulic
<b>Sternthruster</b>	hydraulic
<b>Propeller type</b>	folding 4 blade Bruntons
<b>Propeller blades</b>	1
<b>Propeller shaft material</b>	stainless steel
<b>Electric bilge pump</b>	yes
<b>Bilge alarm</b>	yes
<b>Electrical installation</b>	yes

# OYSTER 885

<b>Generator</b>	silent separator Onan Cummins 22,5kw
<b>Running hours generator</b>	1850
<b>Generator 2</b>	silent separator Onan Cummins 13,5kw
<b>Running hours generator 2</b>	6500
<b>Batteries</b>	yes
<b>Start battery</b>	yes
<b>Service battery</b>	Lithium
<b>Generator battery</b>	yes
<b>Battery monitor</b>	yes
<b>Battery charger</b>	yes
<b>Inverter</b>	yes
<b>Shorepower</b>	with cable
<b>Watermaker</b>	Cathelco Seafresh Ltd

## NAVIGATION

<b>Compass</b>	yes
<b>Electric compass</b>	Raymarine
<b>Multi control display</b>	Raymarine
<b>Depth sounder</b>	Raymarine
<b>Log</b>	Raymarine
<b>Windset</b>	Raymarine
<b>Repeater</b>	Raymarine
<b>VHF</b>	yes
<b>VHF handheld</b>	yes
<b>Autopilot</b>	2 pilots, Raymarine
<b>Rudder angle indicator</b>	yes
<b>Radar</b>	yes
<b>GPS</b>	Raymarine
<b>Plotter</b>	Raymarine
<b>Weather receiver</b>	yes
<b>Personal computer</b>	yes

# OYSTER 885

PC connection	yes
Wifi antenna	yes
Electronic chart(s)	yes
AIS transceiver	yes
Radio receiver	yes
EPIRB	yes
Camera	Raymarine
Navigation lights	yes
Loudhailer	yes

## EQUIPMENT

Sprayhood	yes
Bimini	yes
Cockpit cushions	yes
Cockpit table	yes
Bathing platform	yes
Boarding ladder	yes
Transom door	yes
Gangway	Hydraulic
Deck shower	yes
Anchor	yes
Anchor chain	yes
Chain counter	yes
Windlass	electrical Quick
Deck wash	yes
Dinghy	rigid inflatable
Outboard	yes
Life raft	Ocean Safety x 2
Lifejackets	yes
Danbuoy	Jon Buoy 2 pcs by Oceansafety
Rope cutter	yes



# OYSTER 885

<b>Radar reflector</b>	yes
<b>Fenders</b>	yes
<b>Mooring lines</b>	yes
<b>Spare parts</b>	yes
<b>TV</b>	yes
<b>Satellite</b>	Fb250 Fleet Broadband, Satelite phone,
<b>TracVision ball</b>	yes
<b>Radio</b>	yes
<b>DVD player</b>	yes
<b>Cockpit speakers</b>	yes
<b>Fire extinguisher</b>	yes
<b>Extinguisher in engine room</b>	yes

## RIGGING

<b>Rigging</b>	sloop
<b>Standing rigging</b>	PBO and carbon
<b>Brand mast</b>	Hallspars
<b>Material mast</b>	carbon
<b>Spreaders</b>	4
<b>Mainsail</b>	yes
<b>Fully battened mainsail</b>	yes
<b>Furling boom</b>	yes
<b>Genoa</b>	yes
<b>Genoa furler</b>	Hydraulic Reckmann
<b>Code Zero</b>	yes
<b>Gennaker</b>	A1, A2, A3
<b>A-symmetric spi</b>	yes
<b>Staysail</b>	yes
<b>Removable innerforestay</b>	yes
<b>Reefing System</b>	main in-boom furling
<b>Backstay adjuster</b>	hydraulic

# OYSTER 885

<b>Boomvang</b>	hydraulic
<b>Multifunctional winches</b>	halyard/sheet winches 6
<b>Spi-pole</b>	carbon
<b>Isolated backstay</b>	yes

# OYSTER 885



# OYSTER 885



# OYSTER 885



# OYSTER 885



# OYSTER 885



# OYSTER 885





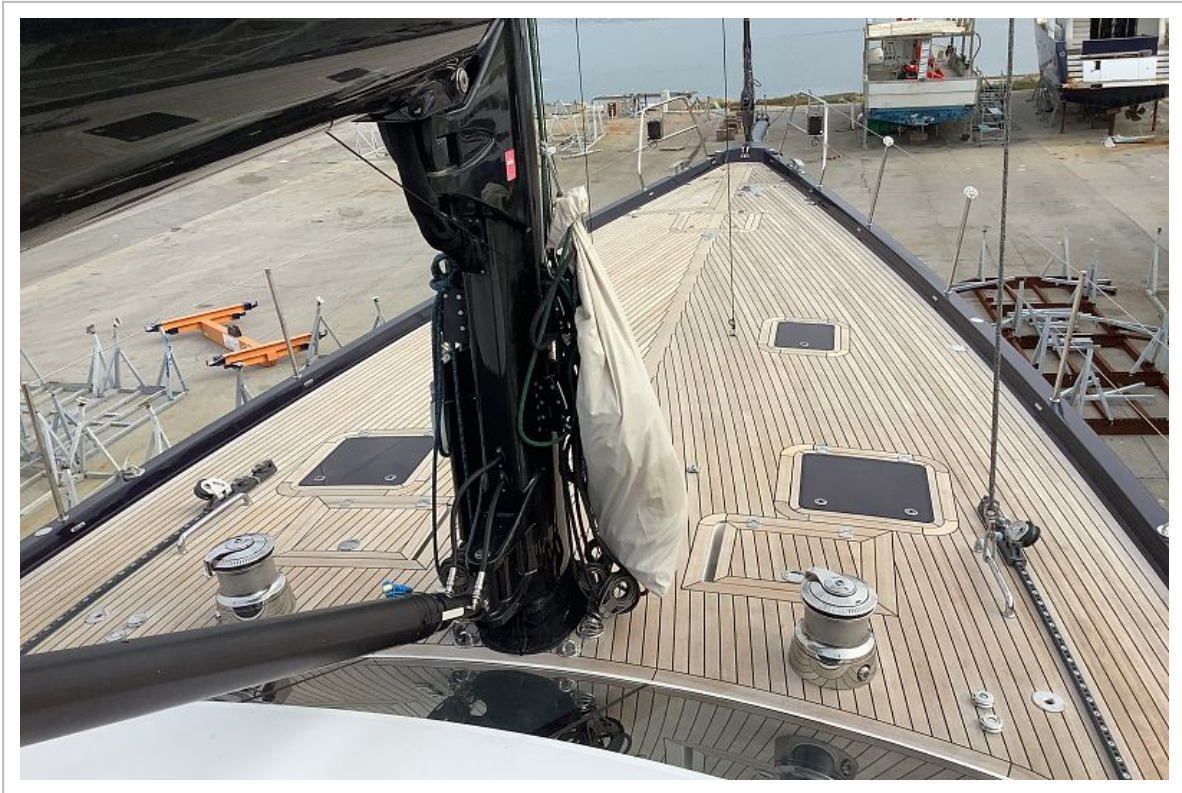
# OYSTER 885



# OYSTER 885



# OYSTER 885



# OYSTER 885



# OYSTER 885



# OYSTER 885



# OYSTER 885



# OYSTER 885

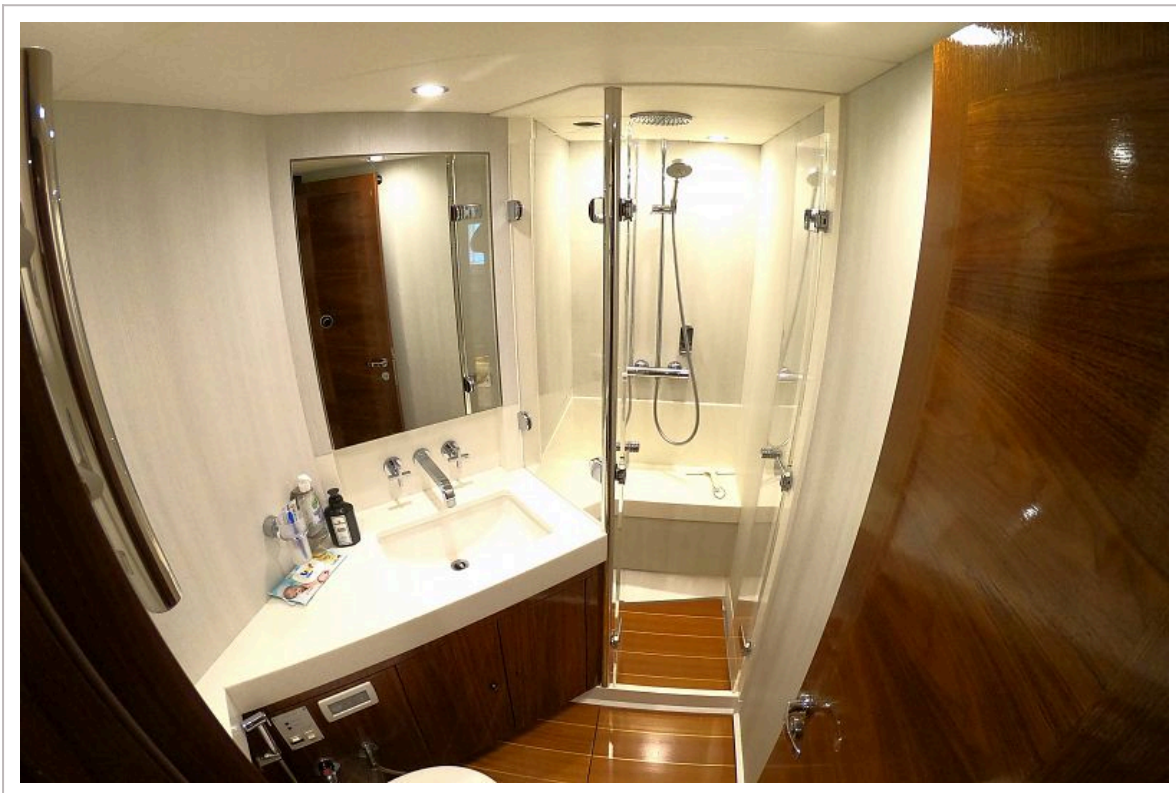




# OYSTER 885



# OYSTER 885



# OYSTER 885



# OYSTER 885

